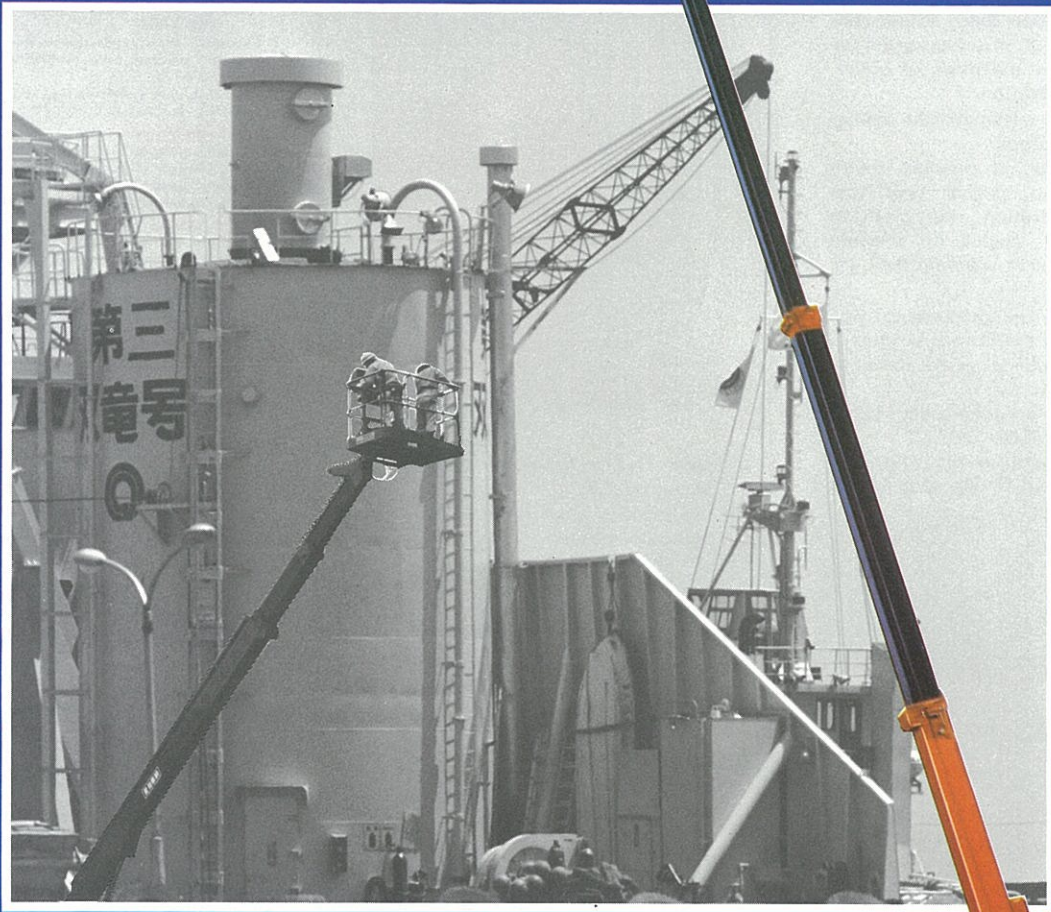


AICHI

**SELF-PROPELLED
AERIAL-PLATFORM**

SP-250

**Maximum loading capacity 250kg
Maximum platform height 25m**



**Advanced Design in Engineering.....
for the Optimum in Safety and Performance.**



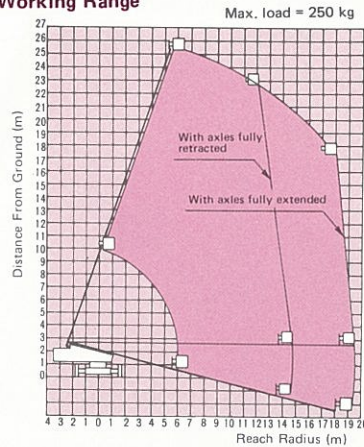
AICHI SHARYO CO.,LTD.

FEATURES:

- The SP-250 has a 3-stage telescoping boom with 25 m at platform bottom and load capacity of 250 kg.
- Extension axles provides super wide working range.
- A maximum 14.8 m working radius is possible even with axles retracted.
- Platform rotation of 45° in either direction provides easy approach to job positions.
- Boom elevation/extension, jacking, axle extension, travelling, steering, turret and platform rotation, and acceleration can be operate from platform control station.
- All boom operation can be switched smoothly from low to high speed, providing safe access to job positions.
- Automatic boom elevation speed limiter controls the elevation and lowering speed of boom according to the extension of boom, thus realizing safety operation.
- A built-in mechanism automatically applies brakes when travelling stops.
- The lower control station provides boom operation, acceleration, engine start/stop, emergency pump activation, and platform levelling. In addition, engine oil pressure warning light and coolant warning light are also installed.
- The travel speed controller prevents high speed moving while the platform is elevated.
- An alarm warning sounds when travelling slope more than 3°.
- An electrically operated emergency pump kicks in when engine trouble occurs.
- Hydraulic motor directly drives wheels to provide travelling power. Choice of 2 speeds, high and low.



Working Range



- (1) Boom flexion is not shown in the range diagram above.
- (2) The working range is constant at any rotation angle (360°).
- (3) The working range is calculated for horizontal firm surfaces with a wind factor of less than 16 m/s.

AICHI SP-250 Main Specifications

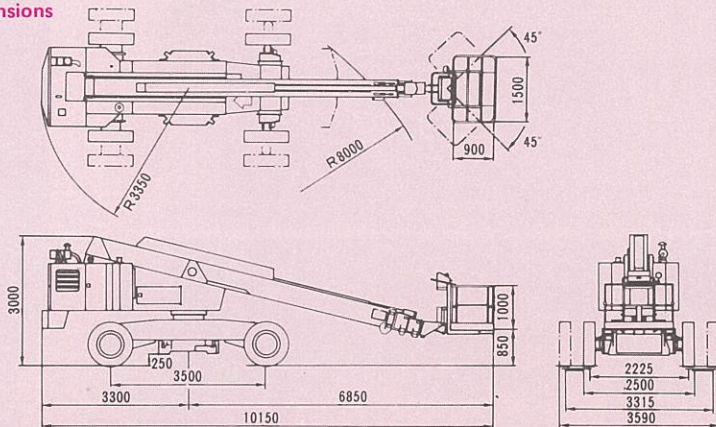
- **Platform**
Max. load: 250 kg
Max. lifting height: 25.0 m
Max. working radius: 19.5 m (with axles fully extended)
14.8 m (with axles fully retracted)
Internal dimensions: 1.5 m (W) x 0.9 m (D) x 1.0 m (H)
Rotation: 45° in either direction
- **Boom**
Length: 7.90 m ~ 24.25 m
Extension/retraction stroke: 16.35 m
Elevation angle: -13° ~ 71°
Rotation: 360° continuous
- **Operation Speed**
Elevation: 80 sec/strk (up, down) (when boom is extended 3 m)
50 sec/strk (up, down) (when boom is extended less than 3 m)
Extension: 40 sec/strk (extension, retraction)
Rotation: 0.6 r.p.m. (when working radius is over 10 m)
1.0 r.p.m. (when working radius is less than 10 m)
Travelling: 0 ~ 4 km/h (high), 0 ~ 2 km/h (low)
- **Hydraulic System**
Operating pressure: 175 kg/cm² (main system), 140 kg/cm² (auxiliary system)
Hydraulic pump: 40 + 10 cc/rev
Hydraulic reservoir: 240 ℓ
- **Safety Devices**
Pressure relief valve, pilot-operated check valve, Boom elevation safety device, Boom extension safety device, platform leveling device, Travel warning alarm, emergency stop switch, Slope warning alarm, travel speed controller, rotation lock device, safety belt attachment point, emergency pump, stability controller, rotation speed limiter, elevation speed limiter.
- **Accessories**
Wheel chocks, work light, spare parts, standard tools
- **Options**
Optional platform load (250 kg: unrestricted, 400 kg: restricted), 4WD,
Wide angle platform rotation (80° left ~ 80° right),
Oil guide on top surface of boom, Hose reel for gas welding, compressed air, electric welding cable and water lines, Hydraulic outlet at platform (140 kg/cm², 15 ℓ min), Cylinder rod boots, Pre-cleaner for engine air intake, Rotating beacon, Headlights, Electric outlet at platform (100V 10A), Transparent plastic panel cover for upper control console, foot switch for deadman control, Axle extension jack.

Brief Chassis Specifications

- **Vehicle Dimensions**
Overall length: 10,150 mm
Overall width: 2,500 mm (axles retracted), 3,590 mm (axles fully extended)
Overall height: 3,000 mm
Wheel base: 3,500 mm
Tread base: 2,225 mm (axles retracted), 3,315 mm (axles fully extended)
Tail-swing radius: 3,350 mm
Minimum ground clearance: 250 mm (lower side of frame)
Tires: 10.00 x 20 (mono-filled)
- **Performance**
Min. turning radius: 8,000 mm
Max. traction: 2,510 kg (9°, converted to gradeability)
- **Weight traction**
Vehicle weight: 15,500 kg
Removable counter weight: 2,500 kg
Without counter weight: 13,000 kg
- **Engine**
Model: Mitsubishi S4E-2
Max. output: 45 ps/2,000 r.p.m.
Max. torque: 18 kg-m/1,500 r.p.m.
Total displacement: 2,957 cc
- **Battery**
Voltage: 24 V
- **Fuel Tank**
Capacity: 180ℓ

* Specifications subject to change without prior notice.

Vehicle Dimensions



- The vehicle shown in the picture above is one specially outfitted for use in shipyards.



AICHI SHARYO CO., LTD.

Overseas Sales Dept.

1-2-13 IWAMOTO-CHO CHIYODA-KU TOKYO JAPAN 101
TEL 03-862-7625 TELEX 2655520 AICHI

Distributor